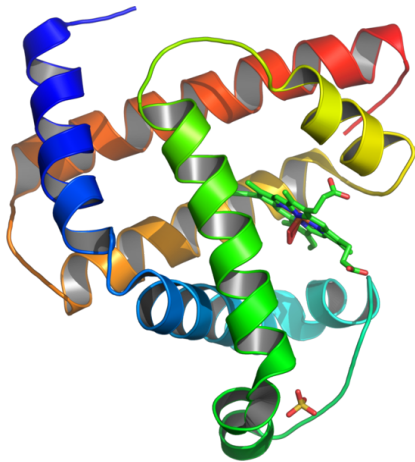


## Secondary structures of proteins

Proteins — linear polymers folded in compact globules

Secondary structures — standard conformations of peptide chains

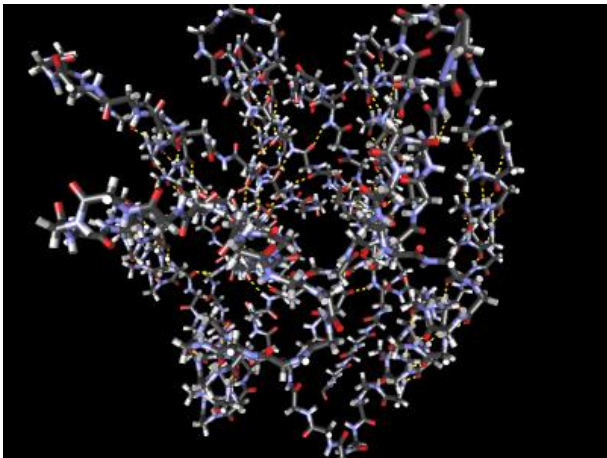
Myoglobin ( $\alpha$ -helices)



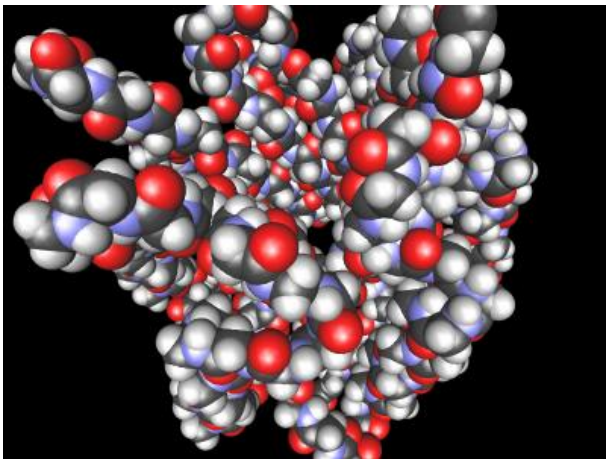
# $\alpha$ -helices and $\beta$ -chains



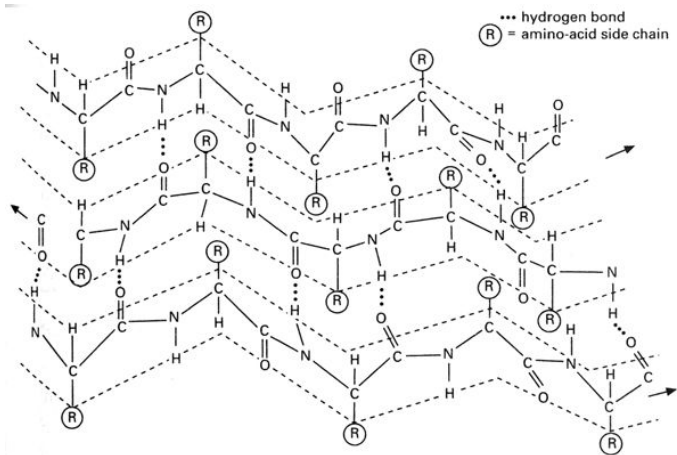
The same protein — scheme of the peptide chain



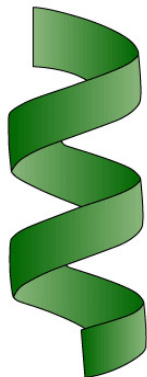
The same protein — the form which takes into account the sizes of the atoms



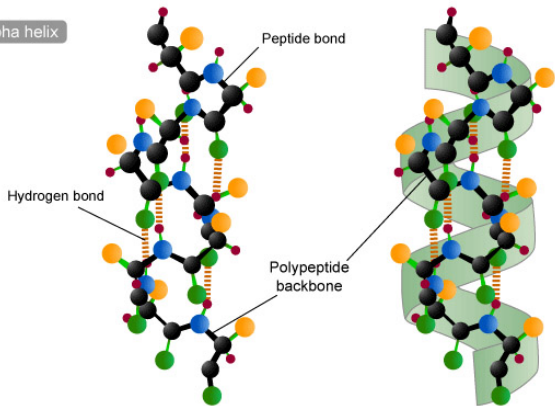
# $\beta$ -sheet — stairway like structure



# $\alpha$ -helix



Alpha helix



Dept. Biol. Penn State ©2002